

Taylor Sweden

INSTRUCTION MANUAL

ELECTRONIC AIR FRYER



MODEL 300010YCM

PLEASE READ THIS MANUAL CAREFULLY BEFORE OPERATING THE PRODUCT AND RETAIN IT FOR FUTURE REFERENCE

IMPORTANT SAFETY INSTRUCTIONS

When using electrical appliances, basic safety precautions should always be followed to reduce the risk of fire, electric shock, and/or injury to persons. These include the following:

1. Read all instructions before using this appliance.
2. This appliance generates heat during use. Do not touch its hot surfaces. Only touch the handles and knobs.
3. To protect against electric shock, do not place or immerse the appliance, its power cord or plug in water or any other liquid.
4. This appliance is not intended for use by children or by persons with reduced physical, sensory, or mental capabilities, or those who lack experience and knowledge. Close supervision is necessary when any appliance is used near children. Children should be supervised to ensure that they do not play with the appliance. Keep the appliance and its cord out of reach of children.
5. Unplug the appliance from the power socket when not in use, before putting on or taking off parts, and before cleaning it. Allow it to cool before putting on or taking off parts and before cleaning. To disconnect the appliance, turn all control knobs to the "OFF" position, then unplug it from the power socket.

-
- Do not unplug it by pulling on the cord, always grasp the plug.
6. Do not operate any appliance with a damaged cord or plug or after the appliance has malfunctioned or has been damaged in any way. Do not attempt to replace or splice a damaged power cord.
 7. The use of accessory attachments not recommended by the appliance manufacturer may cause injuries.
 8. Do not use this appliance outdoors or for commercial purposes.
 9. Do not let the power cord hang over the edge of a table or counter, and do not let it touch hot surfaces.
 10. Do not place the appliance on or near wet surfaces or sources of heat, such as a hot gas or electric burner, or in a heated oven.
 11. Extreme caution must be taken when moving any appliance containing hot oil or other hot liquids.
 12. The heating base is subject to residual heat from the cooking process. Do not touch the heating base immediately after use. Allow it to cool before handling.
 13. Do not use the appliance for anything other than its intended use. Misuse can cause injuries.

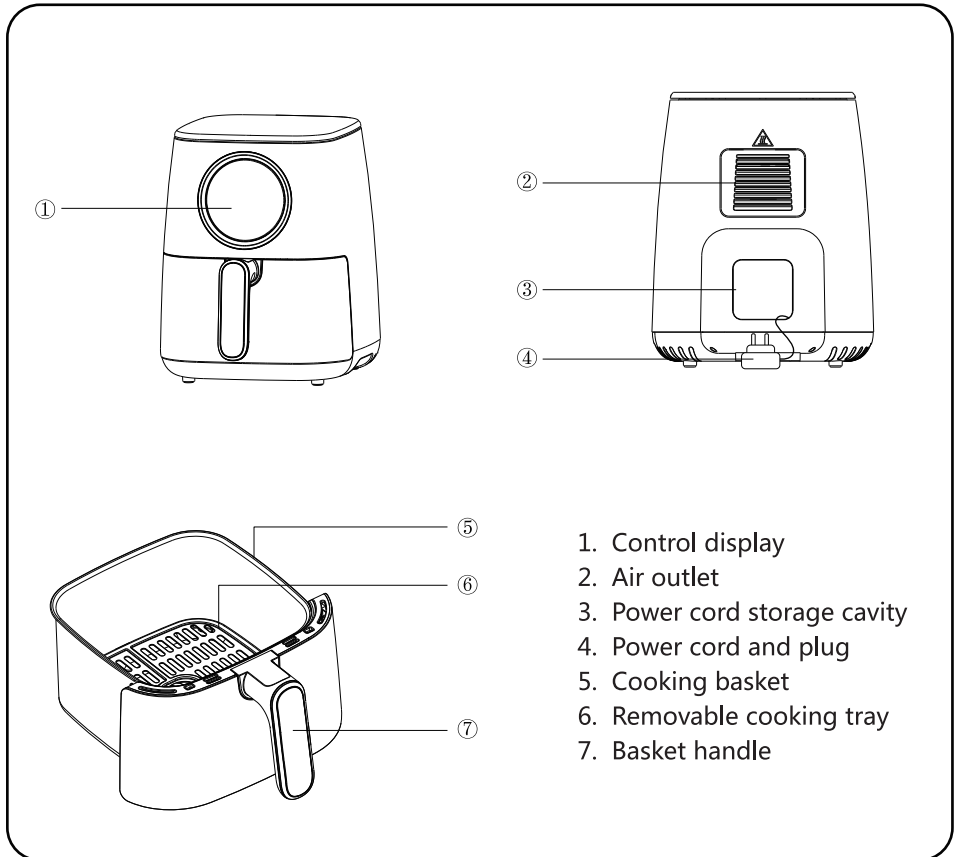
-
14. Intended for household countertop use only. Keep a clear space of 6 inches from the wall and on all sides. Always use the appliance on a dry, stable, level surface.
 15. When the appliance is in the tilted position, the cooking basket will not remain out on its own. Always return the appliance to the level position before pulling out the cooking basket.
 16. **WARNING:** Spilled food can cause serious burns. Keep the appliance and its cord well away from children.
 17. Never drape the power cord over the edge of a counter or table, never use a power socket located below a counter, and never use this appliance with an extension cord.
 18. Do not use this appliance with a programmer, timer, wireless plug adapter or a plug socket that allows remote control, and do not connect it to a circuit that is regularly switched on and off by the electricity company.
 19. Some countertop and table surfaces are not designed to withstand the prolonged heat generated by certain appliances. Do not set the heated appliance on a finished wood table. We recommend placing a hot pad or trivet under your air fryer to prevent possible damage to the surface.

TECHNICAL SPECIFICATIONS

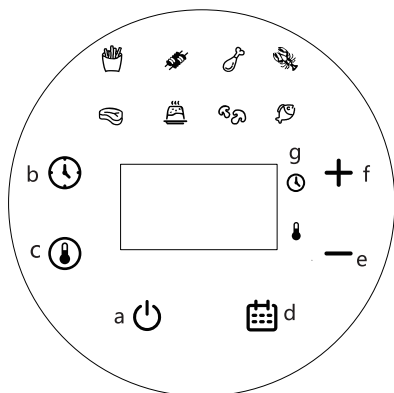
Model No.	300010YCM
Power Supply	120 V 60 Hz
Power Consumption	1400 W
Dimensions	L13.5*W10.3*H12.8 inches
Basket Capacity	1.1 Gallon

Specifications and design are subject to change without notice.

PRODUCT OVERVIEW



KEY FUNCTIONS



a	ON/OFF button: Start or pause the operation with a short press. Stop the operation with a long press.
b	Time button: Use to adjust the cooking time (1-60 min)
c	Temp. button: Use to adjust the cooking temp. (120°F -400°F)
d	Menu button: Use to select one of the 8 programmed menus (see the table below for the menu details)
e	Decrease button
f	Increase button
g	Time and temp. indicators

BEFORE FIRST USE

1. Unpack the appliance and remove all the packaging, promotional materials and stickers. Remove all

printed documents. Wash the inner cooking basket and removable cooking tray with warm, soapy water. Rinse and then dry all the parts. The air fryer is now ready to be used.

- Never immerse any part of the air fryer body, its power cord or its plug in water or any other liquid. Before assembling or disassembling your air fryer, ensure that it is unplugged and that all parts are cool.
- During the initial use of this appliance, some slight smoke and/or odour may occur. This is a normal occurrence with heating appliances and will stop after a few uses.

OPERATING INSTRUCTIONS

- Place the fryer on a flat surface. Place the removable cooking tray into the air frying basket.
- Put the ingredients into the basket and position the basket correctly.
Tip: If necessary, you may preheat the fryer before putting the food in.
- Plug in the appliance. All indicators will flash about 30 times, after which only the ON/OFF button will remain on. Press the ON/OFF button to enter the function choice mode; the display will show the default setting "400°F /15min" .
- Press the temperature button, then press the + or – symbol to increase or decrease the cooking temperature by 10 ° F each time. Holding either button down will rapidly change the temperature in that direction. The temperature control range is(120°F -400°F).
- Press the time button, then press the + or – symbol to increase or

decrease the cooking time by 1 minute each time. Holding either button down will rapidly change the cooking time in that direction. The timing range is 1-60 minutes.

6. Select the menu button to scroll through the 8 menus offering popular food choices. Once selected, the corresponding recipe indicator will come on and the fryer will be set to the default time and temperature for that menu. You can also adjust the time and temperature for a certain menu according to the above steps.

Ingredients	Default temperature (°F)	Default time (minutes)
French fries	400	15
Meat strips	400	10
Chicken legs	360	20
Shrimp	360	12
Steak	360	12
Cake	320	30
Vegetables	360	15
Fish	360	15

7. Press the ON/OFF button to start the air frying process. The display will alternatively show the set time and temperature.

Tips:

- Pull the basket out to shake the food if necessary; the countdown timer will pause. Slide the basket back into the air fryer by the handle; the countdown timer will restart.
NOTE: The removable cooking tray may move out of place when shaking/stirring food in the basket. Ensure that the cooking tray is in the proper position before returning it to the air fryer to continue cooking.
 - Short pressing the ON/OFF button will pause the cooking process, you can adjust time and temperature according to above steps at this time. Long pressing the ON/OFF button will stop the cooking process.
8. When you hear the timer bell, the set cooking time has elapsed and the fryer will enter standby mode. Pull the basket out of the fryer and place it on a heat-resistant surface. Check if the food is ready. If not, simply put the basket back into the air fryer and set the time for a few extra minutes.
9. **NOTE:** Once the air fryer enters standby mode, it will blow air for 15 seconds to dissipate heat.
10. When the food is ready, carefully pull the cooking basket from the air fryer and empty the food onto a serving dish. Be careful that the cooking tray does not come loose. For larger and more fragile items, use tongs to lift the food from the basket. Do not use metallic utensils to remove food from the cooking basket, use only heat-resistant, non-metallic utensils.

CLEANING AND MAINTENANCE

1. Always unplug your air fryer and allow it to cool completely before cleaning it. NEVER immerse the main body, power cord or plug in water or any other liquid. Never use harsh abrasive cleaners or cleaning materials.
2. Carefully wipe any oil spatters from the heating fan cover using kitchen paper. Wipe the outer body with a clean, slightly damp cloth and dry.
3. Wash the removable cooking basket, cooking tray and handle with warm soapy water using a cloth, sponge or non-abrasive brush. Dry completely before use or storage.
4. This appliance has no user-serviceable parts.

STORAGE

1. Unplug the appliance and allow it to cool completely before storing it. Make sure that all the parts are clean and dry. Store the air fryer in a dry location.
2. Do not place any heavy items on top of the air fryer during storage as this may damage it.

WARRANTY: ONE YEAR



TAYLORTECH INC.
16192 COASTAL HWY
LEWES, DE 19958

[HTTP://WWW.TAYLORSWODEN.COM](http://www.taylorswoden.com)
MADE IN P.R.C