



INSTRUCTION MANUAL

PORTABLE FOLDAWAY FAN



MODEL 330100A4U

PLEASE READ THIS MANUAL CAREFULLY BEFORE OPERATING YOUR
PRODUCT AND RETAIN THESE INSTRUCTIONS FOR FUTURE REFERENCE

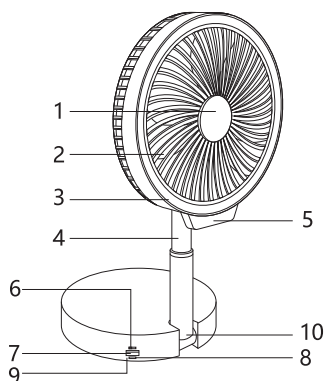
IMPORTANT SAFEGUARDS

1. Please use this product in a safe place to avoid any hazards caused by product damage.
2. To avoid the risk of falling and associated damage, do not place this product on an uneven surface.
3. Do not use the power supply beyond the product load as this could cause overheating and the circuit board to burn out.
4. Do not disassemble or modify this product.
5. The electrical motor of the product can overheat in response to long-term use. It is recommended that the fan is not operated for more than four continuous hours.
6. Do not throw this appliance or treat it roughly as doing so could cause operational issues.
7. Do not place the product in a cool, humid place.
8. Do not throw the product into a fire. Keep the product away from fire and high-heat sources at all times.
9. Warning: This product should not be operated by children under the age of 3.

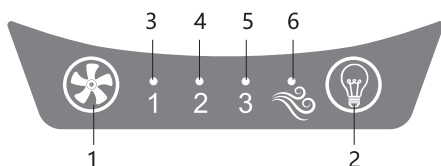
SPECIFICATIONS

Model No.	330100A4U
Charging input	DC 5 V 2A
Power Consumption	6.5 W
Dimensions	L195*W195*H1000 mm
Battery Capacity	8000 mAh

COMPONENT OVERVIEW



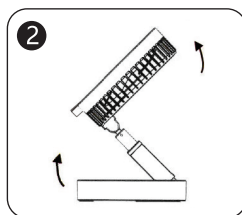
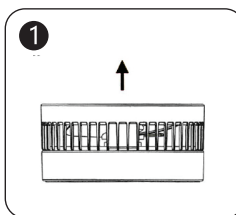
- 1.Fan grille
- 2.Fan blade
- 3.LED light
- 4.Extendable pole
- 5.Control panel
- 6.Power switch
- 7.Mobile phone charging slot
- 8.Battery charging slot
- 9.Charging indicator (blue)
- 10.Locking position



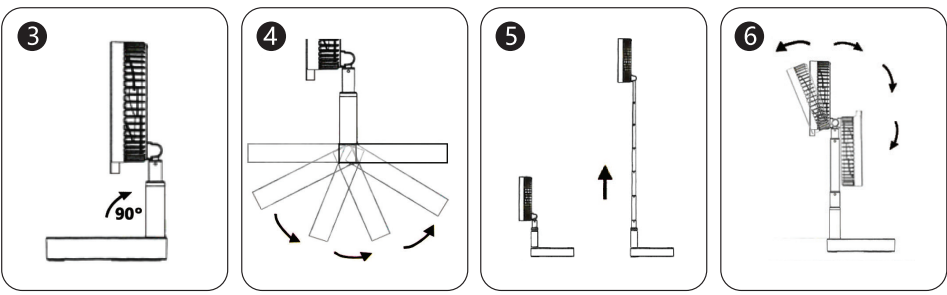
- 1.ON/OFF/SPEED switch
- 2.LED light
- 3.Low speed
- 4.Medium speed
- 5.High speed
- 6.Natural airflow

OPERATING INSTRUCTIONS

- 1.Make sure the power switch is in the off position. Unfold the fan by pulling it upwards.
- 2.Extend the fan according to the arrow direction.
- 3.Set the fan angle to 90°vertically.
- 4.Flip the fan base 180°backwards

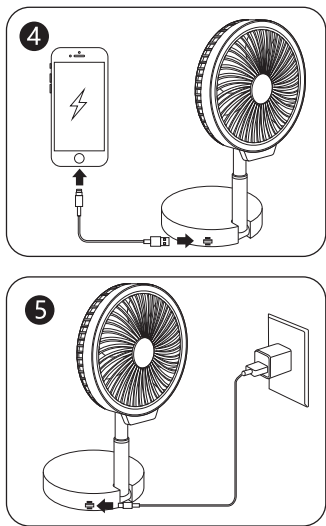


- according to the arrow direction, then lock the pole in position.
- 5.The fan can be extended to a maximum height of up to 100 cm. Pull the pole up or down gently to adjust the height.
- 6.The fan can be positioned face down and bent backwards according to the direction of the arrow.



HOW TO USE

- 1.On/Off: Turn the power switch to the ON position, press the button on the control panel to turn the fan on or off.
- 2.Speed/Natural wind: Press the button continuously to adjust the fan speed through 1(Low), 2 (Medium), 3 (High), and (Natural). In the natural airflow speed setting, the fan speed alternates between different speeds to imitate natural wind flow). The corresponding indicator will illuminate.
- 3.LED light: Press the button on the control panel to turn the LED light on or off. Note: When the LED light is on, while the fan is running, the fan automatically operates in the 1(low) speed.
- 4.Mobile charging: To charge a mobile phone, plug the cable into the USB port on the fan base.
- 5.Battery charging: Plug the cable into the USB port on the fan base to charge the battery. It takes 4.5 hours to recharge the battery from empty to full.

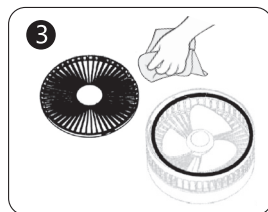
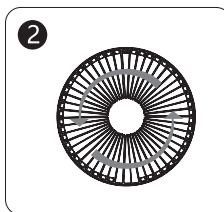


- 6.Battery power status: While charging the battery or operating the fan, the status light blinks every 10s.

Power	Number of times indicator light blinks
0-25%	1
26-50%	2
51-75%	3
76-99%	4
100%	Always on

CLEANING AND MAINTENANCE

1. Before cleaning and performing maintenance, make sure the power switch is in the OFF position.
2. Open the front grille by turning it counter-clockwise.
3. Use only a dry cloth to clean the front grille and fan guard.



DISPOSAL



You can help protect the environment.

Please remember to respect local regulations: Take non-working electrical equipment to an appropriate waste disposal centre.

WARRANTY: 2 YEARS



AIGOSTAR INTERNATIONAL LIMITED
UNIT 4 TEES VALLEY COURT GLENARM ROAD
WYNYARD TS22 5FE GB
GB311003583

[HTTP://WWW.AIGOSTAR.COM](http://www.aigostar.com)
MADE IN P.R.C